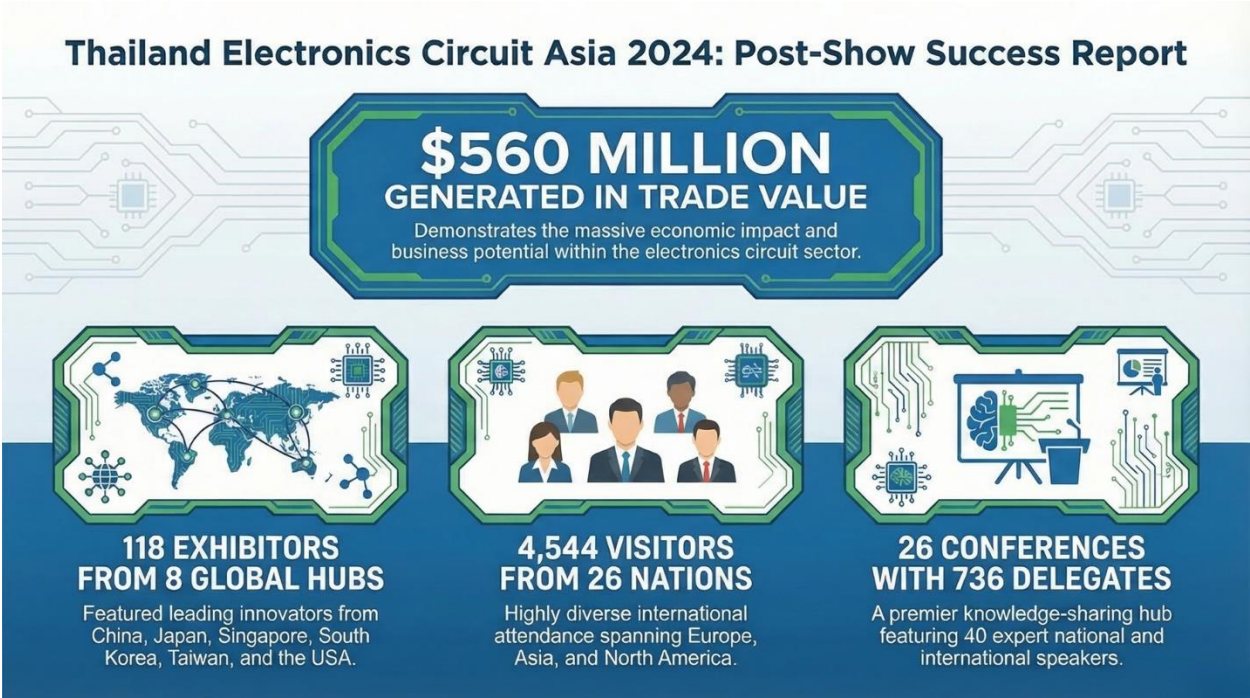


2024 Performance Review and Strategic Scaling Analysis: Thailand Electronics Circuit Asia



1. Executive Strategic Positioning

The 2024 inauguration of Thailand Electronics Circuit Asia marked a critical inflection point for the regional industrial landscape. In an era defined by global supply chain recalibration and the pursuit of manufacturing resilience, this event established itself as the foundational nexus for the Printed Circuit Board (PCB) and Printed Circuit Board Assembly (PCBA) sectors. By serving as a specialized gateway for technical procurement and industrial collaboration, the exhibition has solidified Thailand’s position within the ASEAN electronics ecosystem, transitioning the region from a peripheral assembly point to a central hub for high-complexity manufacturing.

Core Event Identity: 2024 vs. 2025

Feature	2024 Baseline	2025 Strategic Vision
Theme	Manufacturing & Solution of PCB + PCBA	How to Build Effectively a Future Electronics System
Date	24-26 July 2024	20-22 August 2025
Venue	BITEC Bangna, EH101	BITEC Bangna, EH99-100

The 2024 theme, "Manufacturing & Solution of PCB + PCBA," functioned as a disciplined entry point. By focusing exclusively on the PCB manufacturing niche, the event successfully consolidated a high-utility audience of specialized engineers and procurement decision-makers. This strategic focus avoided the dilution common in broader trade shows, ensuring a high density of relevant expertise. This validated success has provided the necessary momentum to scale both the physical infrastructure and the technological scope of the event.

2. Operational Infrastructure and Scaling Trajectory

In the industrial exhibition sector, physical footprint and venue logistics are primary indicators of market demand and sector health. A substantial increase in exhibition space reflects not only rising exhibitor confidence but also the increasing physical complexity of the technologies on display.

Scaling Benchmarks: 2024–2025

Metric	2024 Baseline	2025 Target	Variance
Exhibition Space	5,600 sqm	12,400 sqm	+122%
Venue Configuration	EH101	EH99-100	Premiumized Contiguous Space

Strategic Interpretation of Expansion

The 122% increase in square footage and the shift to Halls 99-100 represent a "premiumization" of the exhibition. The move to more modern, contiguous halls facilitates superior visitor flow and accommodates the significant "Upstream" segment—which represents 43% of the exhibition's composition. This expansion is specifically designed to house larger-scale industrial machinery and fabrication equipment, proving that the event is a "maker's" exhibition rather than a mere distribution showcase. This physical evolution is the prerequisite for capturing a larger share of the regional electronics market and supporting an increasingly complex international stakeholder base.

3. Stakeholder Composition and Global Reach

The transition to a "regional hub" requires deep internationalization. An exhibition's prestige is measured by its ability to facilitate cross-border partnerships and establish international technical benchmarks.

The 2024 event hosted 118 exhibitors (66 International | 52 National). The 2025 trajectory targets 254 total exhibitors, representing a **115% increase in exhibitor count**. This growth is underpinned by an 88% expansion in geographic representation, moving from 8 participating countries in 2024 to 15 in 2025, including advanced manufacturing leaders such as Germany, the Netherlands, and the United Kingdom.

Global Market Implications

Beyond the exhibitor floor, the event's "Global Reach" is most evident in its visitor demographics. The transition from 26 visitor countries in 2024 to an anticipated 46 in 2025—a **77% increase**—signals a shift from a regional gathering to a global destination. The inclusion of emerging markets and diverse regions such as the Middle East (UAE, Saudi Arabia), South America (Brazil), and South Asia (India, Bhutan) elevates the event's competitive landscape. This diversity ensures that the exhibition serves as a primary draw for a professional demographic seeking world-class innovation.

4. Engagement Metrics and Knowledge Exchange Leadership

High-value exhibitions are increasingly defined by their intellectual capital. The quality of networking and the depth of technical exchange are the true drivers of long-term industrial influence.

2024 Performance Data

- **Visitor Volume:** 4,544 total visitors from 26 countries (1,068 International | 3,476 National).
- **Knowledge Platform:** 26 specialized conferences featuring 40 speakers (23 International | 17 National).
- **Delegate Depth:** 736 registered delegates (228 International | 508 National).

Analysis of Engagement Maturity

A notable data point is the projected **77% growth in conferences** for 2025, perfectly mirroring the 77% growth in visitor countries. This consistency indicates a balanced expansion of both scale and substance. Furthermore, the projected **131% increase in delegates** (reaching 1,703) suggests a fundamental shift in attendee profile. The event is moving away from casual visitation toward deep professional engagement, where participants view the exhibition as a critical site for high-level decision-making and R&D development. This professional depth is the engine behind the significant trade value generated on the exhibition floor.

5. Economic Impact and the Strategic Pivot to Future Systems

Trade value and thematic evolution remain the ultimate metrics of industry relevance. To maintain market leadership, an event must anticipate technological shifts and move up the value chain.

In 2024, the event facilitated a **Trade Value of 560 Million USD**. While this figure is maintained as a baseline for 2025, it should be viewed as a **conservative floor**. Maintaining this high-ticket value while doubling the exhibition space indicates a strategic focus on high-quality, high-conversion leads rather than raw volume.

Thematic Analysis: Moving Up the Value Chain

The exhibition is undergoing a significant strategic pivot from "PCB + PCBA" to "**How to Build Effectively a Future Electronics System.**" This evolution captures a more comprehensive segment of the industry:

- **Upstream (43%) & Midstream (46%):** Sustaining the core manufacturing and fabrication strength.
- **Downstream (11%) & System Design:** Moving into R&D, AI integration, IoT, and automotive electronics.

This shift positions the event to capture the higher-margin segments of the industry, focusing on how individual components integrate into the complex "Future Systems" required for the next generation of global technology.

2024-2025 Growth Benchmarks

- **Exhibition Space:** +122%
- **Exhibitor Count:** +115%
- **Visitor Country Representation:** +77%
- **Number of Conferences:** +77%
- **Delegate Engagement:** +131%

The 2024 performance established a successful launchpad, providing the market validation necessary for Thailand Electronics Circuit Asia to emerge as a dominant force in the global electronics sector. By bridging the gap between national manufacturing and international innovation, the event has secured its trajectory as an essential pillar of global industrial growth.